

Current Data Parameters
 NAME GLP34
 EXPNO 10
 PROCNO 1

F2 - Acquisition Parameters
 Date_ 20200926
 Time_ 12.19 h
 INSTRUM spect
 PROBHD z116098_0564 (
 PULPROG zg30
 TD 65536
 SOLVENT CDCl3
 NS 16
 DS 2
 SWH 8012.820 Hz
 FIDRES 0.244532 Hz
 AQ 4.0894465 sec
 RG 70.67
 DW 62.400 usec
 DE 6.50 usec
 TE 300.0 K
 D1 1.00000000 sec
 TD0 1
 SFO1 400.1324708 MHz
 NUC1 1H
 P1 9.84 usec
 PLW1 14.56099987 W

F2 - Processing parameters
 SI 65536
 SF 400.1300089 MHz
 WDW EM
 SSB 0
 LB 0.30 Hz
 GB 0
 PC 1.00

成都普菲德生物技术有限公司
<http://www.sc-victory.com>

GLP34

— 183.96

— 171.04

— 143.61

— 122.56

80.93

77.33

77.02

76.70

55.30

47.56

46.55

45.84

41.55

40.92

39.28

38.07

37.70

36.99

33.79

33.06

32.53

32.44

30.67

28.04

27.67

25.90

23.58

23.53

23.39

BRUKER

Current Data Parameters

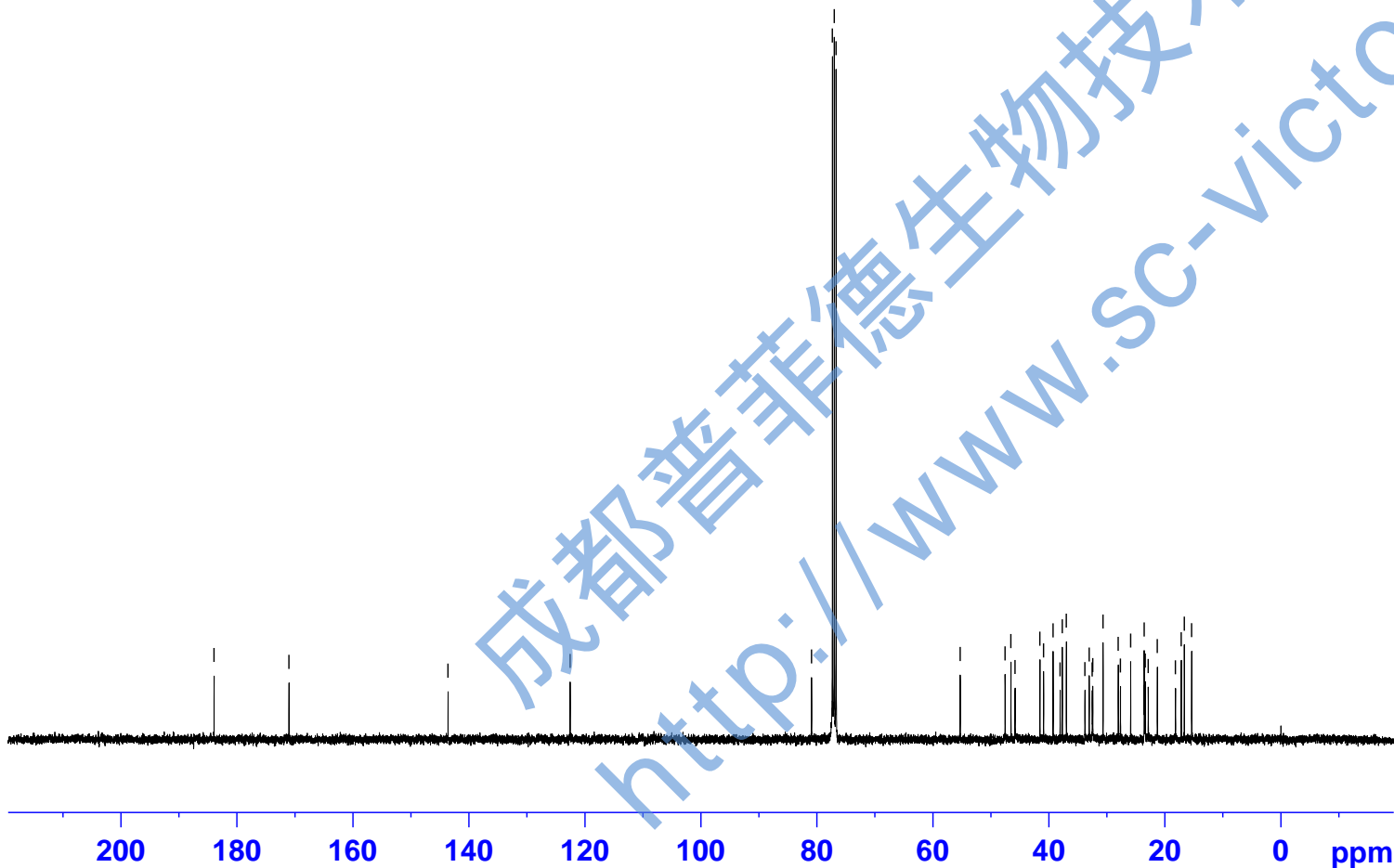
NAME GLP34
EXPNO 11
PROCNO 1

F2 - Acquisition Parameters

Date_ 20200926
Time 12.48 h
INSTRUM spect
PROBHD Z116098_0564 (
PULPROG zgpg30
TD 65536
SOLVENT CDC13
NS 500
DS 4
SWH 24038.461 Hz
FIDRES 0.733596 Hz
AQ 1.3631488 sec
RG 198.68
DW 20.800 usec
DE 6.50 usec
TE 300.0 K
D1 2.00000000 sec
D11 0.03000000 sec
TD0 1
SFO1 100.6228298 MHz
NUC1 13C
P1 10.53 usec
PLW1 69.16899872 W
SFO2 400.1316005 MHz
NUC2 1H
CPDPRG[2] waltz16
PCPD2 90.00 usec
PLW2 14.56099987 W
PLW12 0.17406000 W
PLW13 0.08755000 W

F2 - Processing parameters

SI 32768
SF 100.6127685 MHz
WDW EM
SSB 0
LB 1.00 Hz
GB 0
PC 1.40



成都普菲德生物技术有限公司
http://www.sc-victor.com